

## **Rotherham City Learning Centres**

The City Learning Centres (CLC) have enjoyed great success over the last 6 years and continue to go from strength to strength. In order for us to sustain the development of the CLCs in terms of their course delivery, accreditation and overall status of a respected centre of excellence it has been necessary for us to extend our workspace in order to meet these ever growing demands.

In line with the CLC current ethos of providing innovative, cutting edge courses in an environment that not only enthuses and engages its learners but impresses them too, we developed a concept in partnership with professional architects to address the growing need for space.

The Curve at Rawmarsh CLC and the extension to Winterhill CLC offer a sympathetic design principle that provides an open learning and safe environment to engage learners of all ages. The buildings themselves encompass all aspects of a modern teaching space designed exclusively to mirror the innovation imparted to its learners. The 2 million pound investment has developed learning spaces that are a credit to Rotherham.

They are specialist centres, which will teach skills that may increase life choices for the community of Rotherham.

The Curve at Rawmarsh and the new facility at Winterhill incorporate a number of flexible working spaces, which are used for primary, secondary, post 16, adult community and business use. The new learning environments provide industry standard facilities. They offer appropriate spaces for additional and alternative accredited learning opportunities.

### Rawmarsh City Learning Centre

- Green Screen Film Studio
- Photography Studio
- Animation Studio
- TV Studio/ Video edit suite
- Radio Station
- 3 ICT Suites Mac/PC
- 3D Projection and cinema screen
- Raked seating for lecture style training

### Winterhill City Learning Centre

- Green Screen Film Studio
- Photography Studio
- Performance Studio
- Video Editing Suite
- Meeting Room
- Radio Station
- 3 ICT Suites Mac/PC
- Raked seating for lecture style training.

In more recent years the CLCs have become very much part of the School Effectiveness Service, working collaboratively to enhance teaching and learning through excellence in ICT. This partnership has produced many successes.

From September 2011 to February 2012 there have been over 9000 children, young people, teachers, education staff and adults engaged in a learning/training activity from over 68 Rotherham schools.

We aim to increase this engagement further by expanding the opportunities available and linking with colleagues from other areas of the service more closely.

We currently support and work collaboratively with; Primary, Secondary and Special Schools, Colleges, PRUs, Alternative Curriculum, Learning Support, Children's Festival, NQTs, Sheffield University and an offer of vocational qualifications.

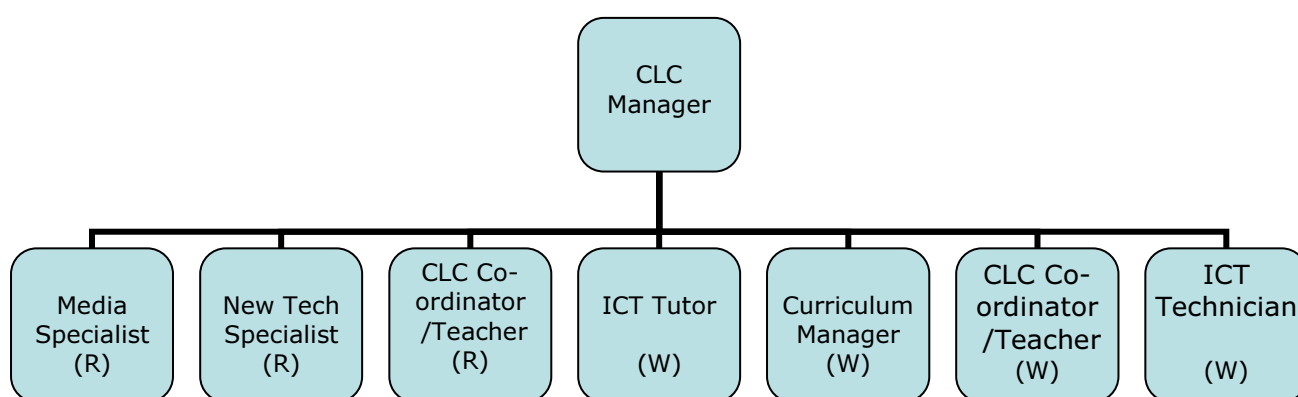
We also:

- Project manage the new Rotherham Connected Learning website
- Co-ordinate ICT Subject Leader meetings.
- Attend New Technologies Group
- Offer advice to schools and teachers
- CPD programme for teachers and associate professionals
- Provide online resources through the Rotherham Connected Learning website.
- Support the LA with bespoke projects such as Film creation, recent Family Recovery Programme film – The Edge

The 2 City Learning Centres have had 2 restructures since January 2011. The first resulted in the loss of 4 posts across the 2 centres. More recently the management structure has been reviewed and from 1<sup>st</sup> January 2012 there is only 1 manager in post who works across both centres.

The restructures have resulted in an annual saving of approximately £150,000.

#### Current Staff structure January 2012



The City Learning Centres at Rawmarsh and at Winterhill are well established digital learning centres. They have a reputation as centres of excellence, which goes beyond the boundaries of Rotherham.

The centres provide a range of creative opportunities for children and young people that many of their peers would never have. Rotherham, as an authority should be very proud of the centres and their achievements. It is important to the community of Rotherham Schools and to the deprived area of Rotherham to have facilities that are of such a high standard. Their existence displays an ongoing commitment from the CLCs and local authority to invest in technology in order to engage students of all ages in the learning process.

The centres provide outstanding, cutting edge learning spaces and creative technologies that are unique in the Yorkshire region. Together both facilities provide a comprehensive range of learning opportunities.

In the recent Ofsted report, ICT in schools 2008-2011 there are a number of good to outstanding examples of teaching using ICT. The majority of these examples incorporate software/hardware and teaching practice already found in the CLCs.